



[www.ewg-anhalt-bitterfeld.de](http://www.ewg-anhalt-bitterfeld.de)

Copyright © 2017 Entwicklungs- und Wirtschaftsförderungsgesellschaft Anhalt-Bitterfeld mbH





# ANHALT-BITTERFELD

1.453 *km<sup>2</sup>*

165.000 People



**NORTH** Jerichower Land (district) | Brandenburg  
**SOUTH** Saalekreis (district) | Free State of Saxony  
**EAST** district-free city of Dessau-Roßlau | Wittenberg (district)  
**WEST** Salzlandkreis (district)

ZERBST/ANHALT

AKEN (ELBE)

OSTERNIENBURGER LAND

KÖTHEN (ANHALT)

RAGUHN-JEBNITZ

SOUTHERN ANHALT

MULDESTAUSEE

ZÖRBIG

BITTERFELD-WOLFEN

SANDERSDORF-BREHNA

## Business Location

# ANHALT-BITTERFELD

The county of Anhalt-Bitterfeld is economically well positioned. Traditionally known for its share in the chemistry industry as well as the many well-known metalworking and mechanical engineering companies, the county is now home to many value-creating industries, including industrial, artisan and agricultural companies and also the service sector. It has also become a tourist attraction. In more than 70 commercial and industrial areas, individual areas of various sizes up to impressive 40 ha are available for the implementation of new ideas. Ideas and innovations arise from the close cooperation between business enterprises and science, such as with the Anhalt University of Applied Sciences, headquartered in Köthen. Around 8,000 young people from all over the world study practice-oriented at the locations and at the highest level in predominantly technical courses. Research and development allow for new findings that generate market-ready products! History and culture can be found everywhere in Anhalt-Bitterfeld. Zerbst scores with Katharina II., a Princess from Zerbst who ruled the Russian empire for 34 years. The small village of Reppichau, resembling an open-air museum, commemorates the famous son of the village, Eike von Repgow. In the thirteenth century, he wrote the Sachsenspiegel, from which justice was spoken from for more than 700 years. The probably most famous musician of the baroque, Johann Sebastian Bach, spent most of his creative

time as court music director in Köthen. Today, the district town is known as the world capital of homeopathy, thanks to Dr. Samuel Hahnemann, who lived and worked here. Numerous sites testify to the history of the region up to the present day, such as the industrial and film museum in Wolfen. The international Bach Festival in Köthen and the Faschfesttage in Zerbst honor the heritage of the two great musicians and attract numerous visitors. In addition, the Baroque Garden Festival in Germany's largest and oldest baroque maze in Altjeßnitz attracts visitors every year. Nature lovers will find relaxation in the nature parks Dübener Heide and Fläming as well as in the biosphere reserve Mittelelbe. Many large and small lakes, which today characterize the mountainous landscape, especially the local recreation area of Goitzsche, delight the people living here as well as the tourists. The Elbe, the Mulde, the Fuhne and the Europe cycling route R1 make it a great place for cycling.

Anhalt-Bitterfeld is a place where the present and the future are shaped by the experience of the past, current knowledge and a considerable amount of new ideas. It is the place where exceptionally high industrial density and extensive cultural landscape meet and merge harmoniously. The economic development agenda offers attractive support programs for the realization of economic goals. Learn more about your possibilities in Anhalt-Bitterfeld!



## ACCESSIBLE, CONNECTED AND INCORPORATED

**WHERE DOES IT GO?** In central Germany, and especially in Anhalt-Bitterfeld, this question is answered specifically! The region is the hub for major trades and commerce. Logistics specialists appreciate it as a distribution center, because Anhalt-Bitterfeld is centrally located and is well networked to guarantee a fast distribution within Germany and Europe. Due to its connection to the east-west routes, Anhalt-Bitterfeld is also ideal for numerous trans-ports to or from Eastern Europe.

- **When?**
- **How much?**
- **How resource-conserving?**

Logistics specialists in Anhalt-Bitterfeld will help you find the right answers.



## LOGISTIC CONNECTION

**AIR TRAFFIC.** The airport Leipzig / Halle, which is connected via the highway A14 with the DHL HUB GmbH is Europe's most modern trans-shipment center for global airfreight! It can be reached within an hour from almost every business location in Anhalt-Bitterfeld. In passenger transport, it is the gateway to the world.

**LOAD AND AUTOMOBILE TRAFFIC.** Anhalt-Bitterfeld is superbly networked thanks to the A9 (Berlin-Munich) as well as the tangent routes of the A14 (Magdeburg-Dresden) and the A38 (Leipzig-Göttingen). The B6n connects the region with the Harz and Lower Saxony. The county's seven connected federal roads provide the grid for a contemporary road network.

**RAIL.** The fact that the county's infrastructure has one of the most extensively developed rail networks in Europe makes it only stronger. The railway stations Bitterfeld and Köthen with ICE and IC connections are reliable junctions for passenger traffic as well as for freight traffic.

**WATERWAYS.** The harbor „Elbhafen Aken“ is the trimodal interface of freight transport in the central German economic area for the trans-shipment of containers, bulk goods, heavy goods and project loads. It links Anhalt-Bitterfeld with the overseas ports in Hamburg and Rotterdam.





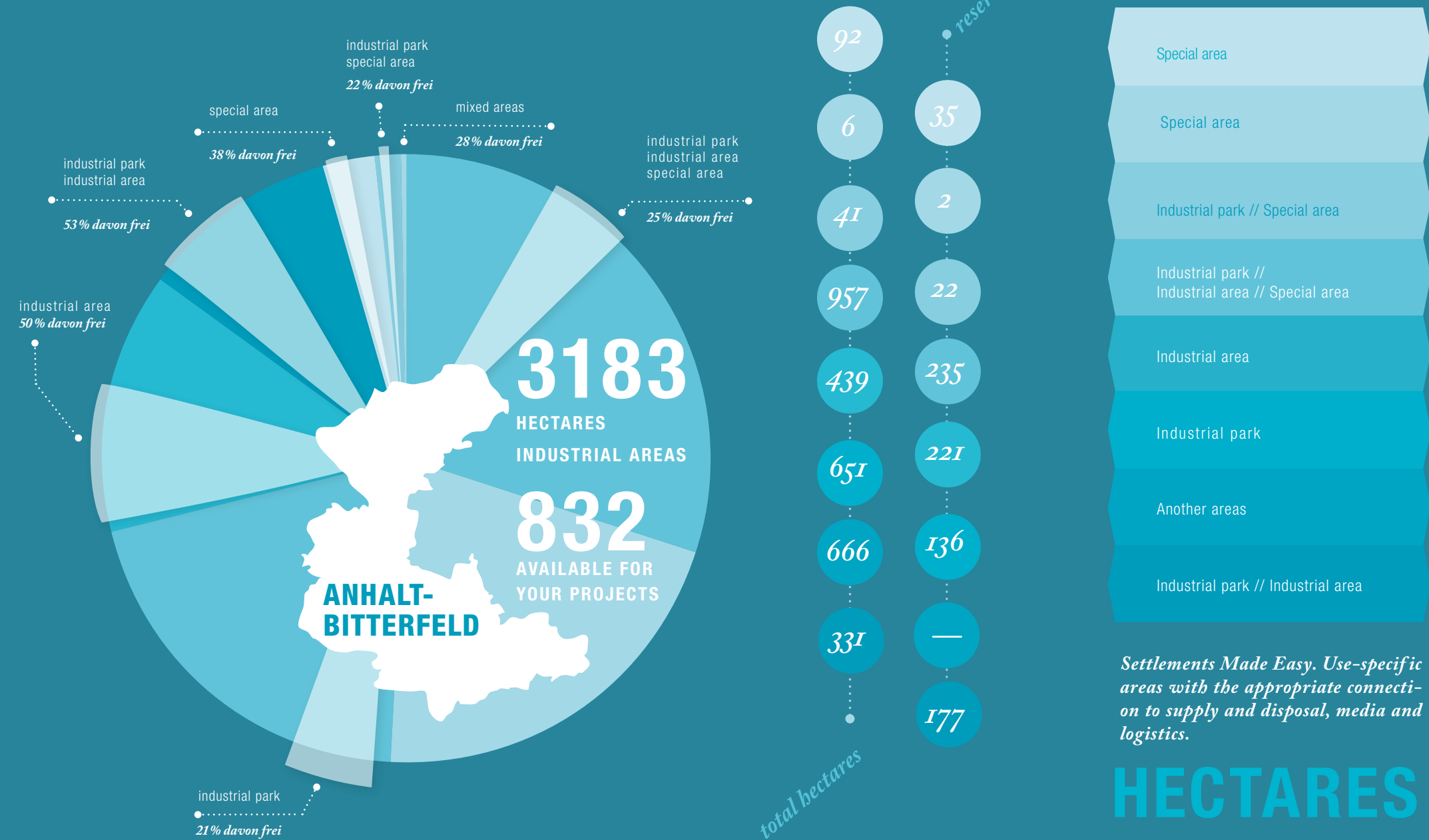
## AUTOMOTIVE

The automotive supplier industry, with its just-in-time interlinking, has ideal logistical conditions in the region and uses them consistently. From Anhalt-Bitterfeld, the automotive industry supplies Wolfsburg, Leipzig, and Zwickau optimally. Today, for example, gearboxes come from the industrial area Roitzsch, the Gewerbepark Zerbst delivers precision components, and car glass comes from the trimodal-connected business location Aken. World brands like Ferrari, VW, Audi and MAN are already important customers of reliable suppliers in their respective industries and logistics in the economic region of Anhalt-Bitterfeld.

The region provides suitable commercial sites and well-developed infrastructure for further settlements in the automotive industry.



Give your success the space it demands.  
Approximately 74% of the currently reported area is already occupied by like-minded people with great ideas.



# THE ZEST FOR ACTION: THIS IS HOW THE INDUSTRIAL AND COMMERCIAL AREAS ARE STRUCTURED.



Available industrial areas from the regional administration body

Sources: statistisches Landesamt: Bodenfläche nach Art der tatsächlichen Nutzung – Gemeinden d. LK Anhalt-Bitterfeld - 2015 in ha  
Analyse der Gewerbestandorte im Landkreis Anhalt-Bitterfeld Stand September 2016, P. 82

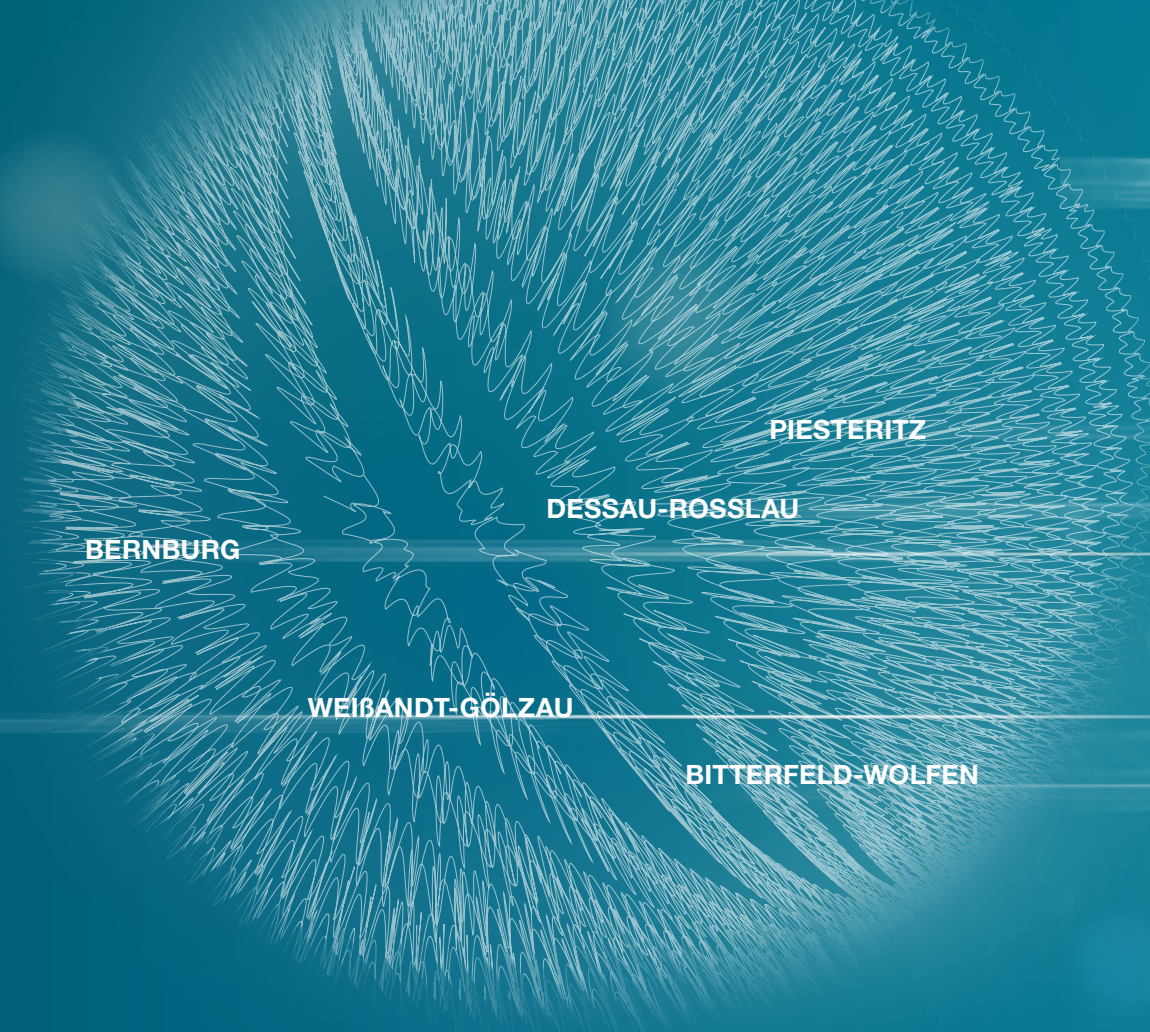


## EFFICIENT CHEMISTRY LOCATIONS

The chemical industry has been located in central Germany for around 125 years, including the county of Anhalt-Bitterfeld. Even at that time, the basis for today's attractive and modern pipeline system was laid, which is the infrastructural basis for the connected material circuits of the sites in the so-called Chemistry Triangle. This network is now in the focus for new opportunities in the 21st century.

Decarbonized electricity generation requires new electricity storage systems. To fathom the infrastructure network for the chemical industry and large-scale storage of electricity-based hydrogen is an essential part of the research and development work done by the project HYPOS – Hydrogen Power Storage & Solutions East Germany. The market-based use of hydrogen as an energy source is the declared goal and a future factor for the attractiveness of Anhalt-Bitterfeld.

*With the aid of fluidized bed technology, granules for detergents and plant protection products are produced. Through intensive research and development, the procedures have been very successfully developed since the 90s.*



PHARMACEUTICAL

FINE AND SPECIALTY  
CHEMICALS

BASIC CHEMICALS  
PLASTICS INDUSTRY

GRANULATING TECHNOLOGY  
„WIGRATEC“



## PHARMA, CHEMISTRY AND PLASTICS

State-of-the-art companies perform as market or technology leaders excellently in production, research and development. Our industrial region is one of the most important innovation engines in eastern Germany.

The chemical park Bitterfeld-Wolfen, with approximately 11,000 employees in 60 manufacturing companies and 300 industry-specific service providers in the plastics, chemical and pharmaceutical industries, is located in the center of the „Mitteldeutsche Chemiedreieck“ (Central German Chemical Triangle) and is close to Leuna, Schkopau, Lutherstadt Wittenberg (Piesteritz) and Bernburg.

**Here, chemistry comes with a history and a future!**

**Science is applied in the production process at a high international level!**

**This is where the innovations are born that conquer the world markets!**

Emil and Walther Rathenau successfully launched their innovative booster electrochemistry here. Reiner Lemoine and Anton Millner used innovations in the production of solar cells to create new and efficient ways in the photovoltaic industry.

Now it is up to you to expand this historical location with future-oriented technologies and procedures! Use the integrated material circuits with high supply security, networked expertise with regionally rooted specialists, but also proven



and adaptable disposal and recycling paths. The goal-oriented and speedy working administration and economic development of the county and municipalities support you in your projects and investments.



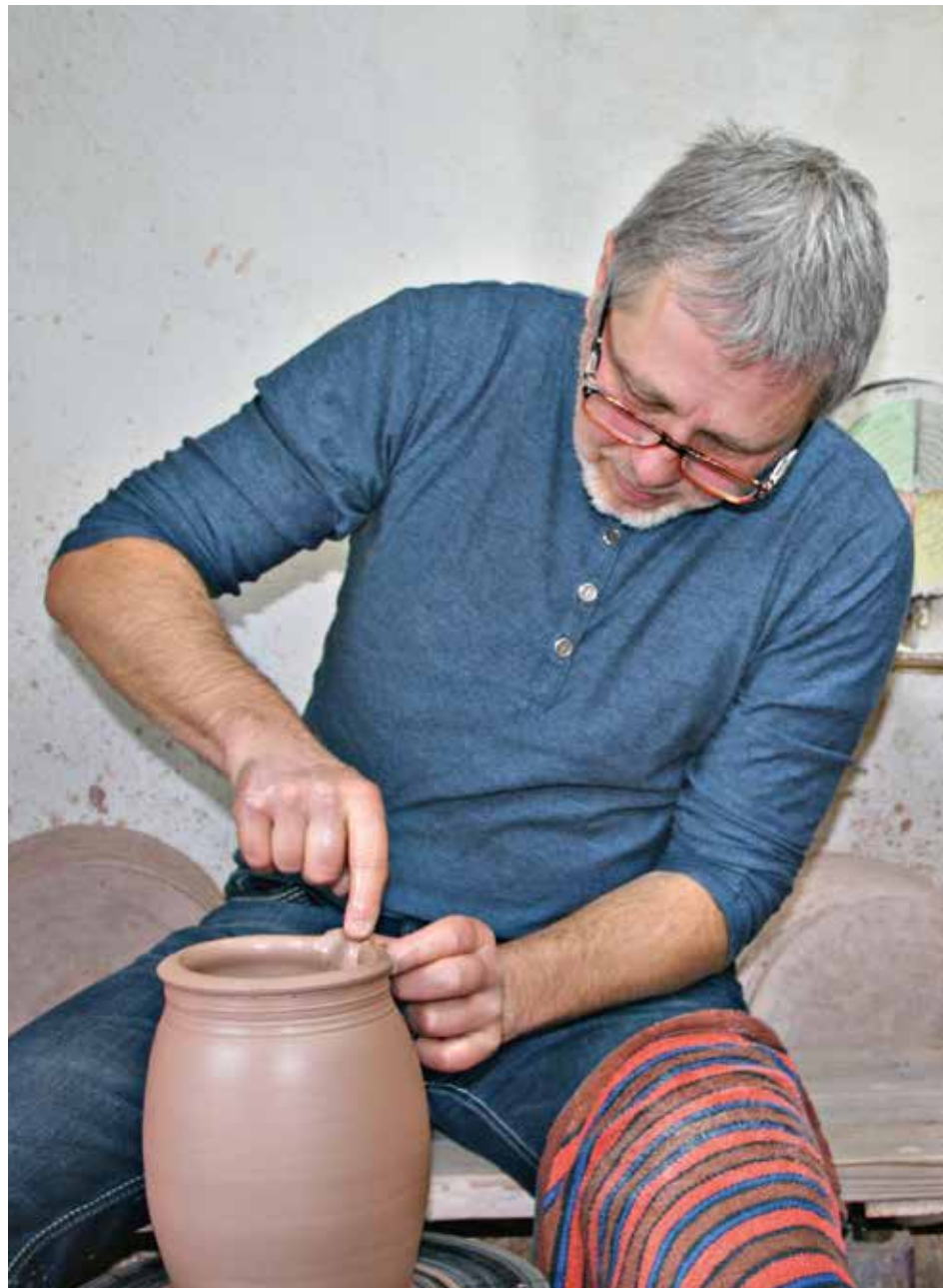


## METAL PROCESSING AND PLANT ENGINEERING

Anyone who needs to store and relocate or install heavy loads or generate heat and steam in industrial boilers or build specific systems suitable for their requirements probably works with components from Anhalt-Bitterfeld. Special cranes have been built and further developed in Köthen for 150 years. Special machines for the BRICS states and North America come from here. From here, long-established companies, which are now integrated into global corporate structures, supply complex machine components and plants all over the world. Expertise, experience, heart blood and finesse are used consistently at all levels of metal processing in modern industrial companies as well as in factories with professional precision. The interlinking of modern production facilities in branch-specific networks, also with the University of Applied Sciences in Anhalt, is the basis for the transfer of knowledge and technology.

Which idea do you want to realize in Anhalt-Bitterfeld, for example in the cluster of metal processing and plant construction?





## ABOUT ABILITY AND DOING – MANUAL PRODUCTION

Because the right location is a trailblazer for the success of an investment, we offer a wide variety of suitable settlements in Anhalt-Bitterfeld for handicraft companies and production plants with manual processing.

As service providers, tradesmen are indispensable for the resident companies. Short distances to customers and suppliers, reasonable competi-

tion, manageable lease, purchase or rental costs, all these criteria make your settlement between Köthen and Zerbst attractive in and around Bitterfeld-Wolfen and Zörbig. In Anhalt-Bitterfeld the structure of the workforce, the population density, the need and the purchasing power for services offered by craftsmen are also ideally balanced.



## NUTRITION AND AGRICULTURE

Fields are sprouting, flourishing, growing and thriving on 91,000 hectares, mainly on black earth soils, in the economic center of Anhalt-Bitterfeld. Free landscapes and historically large fields allow the efficient use of state-of-the-art agricultural technology. Where crops, potatoes, apples, asparagus, hops, sugar beets and energy crops are cultivated, the processing, the refining, and distribution are directly connected. Companies with a high level of experience produce regional products from local raw materials. The brand „Mittellelbe Regionalmarke“ stands for this. Sustainable management, short paths to the customer and resource efficiency as well as reliability and transparency are the requirements of the producers in this network. The products are characterized by their taste and quality. Nutrition and agriculture are understood as a network in the region. This also opens the gates to food trade, energy generation from biomass, agricultural machinery, and plant engineering, which represent sensible additions in the network . The University of Applied Sciences in Anhalt provides scientific expertise in order to operate and further develop agriculture and the food industry at an international level.

**Become part of this development! Anhalt-Bitterfeld is ready for your project!**





## A SUNNY SPOT – SOLAR INDUSTRY

At Thalheim, near the A9 and Leipzig/Halle Airport, the industrial areas of Stakendorfer Busch and Technologie Park Mitteldeutschland – also known as the Solar Valley – have been created especially for the settlement of the solar industry in Anhalt-Bitterfeld.

From a distance, you can see the „Sonnenallee“ (Sun Alley), which is home to state-of-the-art research and development centers in addition to large production plants in the photovoltaic industry.

Solar cells or solar modules based on various thin-film technologies, for example with cadmium telluride and CIGS, are produced and further developed here. The focus lies on innovation, quality, and efficiency.

A short distance from the high-caliber technology developers are suppliers and service providers, which contribute to the continuation of the success story of renewable energies in Anhalt-Bitterfeld. But a glance into the environment also shows that photovoltaic plants provide renewable energy on a large scale in Anhalt-Bitterfeld. The state-of-the-art facilities are installed on large areas. This closes the cycle from the idea to the use of innovative products in Anhalt-Bitterfeld.

In both industrial areas, commercial spaces, partly with buildings, are available for research and development, production, storage as well as administration for your investments.







## SCIENCE – ECONOMY – INNOVATION

As one of the first counties, Anhalt-Bitterfeld has recognized the special importance of innovations for the business location and recognizes outstanding achievements with its own distinction: the Reiner Lemoine Innovation Award. In addition to the various promotional offers for companies and founders, this award, which is sponsored every two years by the district council and is organized by the regional economic development company EWC Anhalt-Bitterfeld mbH, is an important indicator for the innovation-friendly climate in the district of Anhalt-Bitterfeld. Successful research and development require well-functioning networks and excellently trained specialists. The University of Applied Sciences in Anhalt is a guarantor for these potentials, with its application-oriented study courses and research fields. The university is a regional partner of the Competence Network for Applied and Transfer-oriented Research (KAT network), but also for the TGZ Bitterfeld-Wolfen, the Technology Center Köthen (Anhalt) and the Institute for Plastic Technology and Recycling (IKTR e. V.) in Weißandt-Gölzau, just to name a few. Effective cooperation between science and business proves, again and again, that the results of research and development work generate successful and marketable innovations – Made in Anhalt-Bitterfeld!





# ANHALT-BITTERFELD – AN ECONOMIC AREA WITH SPACE TO LIVE.

# INTENSE EXPERIENCES IN A VARIETY OF WAYS.

## FAMILY AND CO.

Outstanding childcare facilities and schools are available in Anhalt-Bitterfeld. Good medical care is provided in the county. There is a dense network of social institutions. In addition, there are attractions for children and the whole family: Shrove Monday procession in Köthen, the Zerbster Asparagus Festival with the world championship in asparagus peeling, the Gfa Trade exhibition in Zerbst, Zerbster Bollenmarkt (a municipal festivity), the Baroque Garden Festival in the maze Altjeßnitz, the Castle Festival Zörbig, the Town Festival Aken, the Bitterfeld Harbor Festival, the children and youth ballets, music school, Water Center Bitterfeld, Kids' World Köthen with indoor playground, the Book Village Mühlbeck-Friedersdorf, High-Rope Garden Quetzdölsdorf, Bitterfelder Arch, the Pegelturm on Lake Bernstein, Goitzsche Marathon, Elbe cycling route, the Europe cycling route R1, Mulde cycling route, Fuhne cycling route, Fläming cycling route.

## HISTORY TODAY

Köthen Castle, with mirror and chapel rooms, Historical Museum of the Middle Ages and the Bach Memorial in Köthen, European Library of Homeopathy and the Hahnemann House in Köthen, Ornithological Museum Naumann Museum Köthen, Prehistoric Collection Köthen, New Fruitful Society in Köthen, Residence Castle Zerbst with Katharina II Monument, Franciscanum with historical Museum of the Synagogue in Gröbzig, outdoor museum Eike von Repgow and art project Sachsenspiegel in Reppichau, local museum Aken, the local museum in Zörbig with castle tower, spinneret museum Gröbzig, industrial and film museum Bitterfeld, Kreismuseum Bitterfeld.

## ANIMAL PARKS, ZOOS & HORSE FARMS

The Animal Park Köthen, animal walks in Güterglück, Greppin, Reuden and Bitterfeld, the alpaca farm Zernitz, riding stables, riding clubs, western riding, greyhound races in Bitterfeld.

## NATURAL AREAS & NATURE RESERVES

The maze of Altheßnitz, nature park Fläming, nature park Dübener Heide, biosphere reserve Mittellelbe with Neolithic pond, information center „Haus am See“ in Schlaitz with nature trail along dammed lake Mulde, environmental center Ronney, landscape conservation area Fuhneau in Wolfen, floodplains of the Mulde, foundling garden on Lake Gröbern, Salegast forest.

## WATER EXPERIENCES

Goitzsche parks and lake landscapes with round trips, harbor, bathing beaches, cycling routes and other tourist attractions, dammed lake Mulde with the „Haus am See“ and nature trail, water walks on the Elbe and Mulde, camping and bathing at the acacia pond Aken, swimming lake Edderitz, lake Löbitz near Trebbichau, Köthen bathing area, the Zerbst swimming pool, the Zerbst public swimming pool, municipal swimming pool of Zörbig, the „Heinz Deininger“ swimming pool in Bitterfeld, the Woliday swimming pool in Wolfen.

## THEATERS, STAGES, FESTIVALS

Köthen Bach Festival, National Bach Competition for Young Pianists in Köthen, International Viola da Gamba Competition Bach-Abel in Köthen, Köthen Autumn, Zerbster Kulturfesttage (culture festival), International Fasch Festival with Fasch Award and Scientific Conference in Zerbst, concerts at the Galerie am Ratswall in Bitterfeld, Spring Break Festival in Pouch.





## TEAM SUCCESS

The Entwicklungs- und Wirtschaftsförderungsgesellschaft Anhalt-Bitterfeld mbH, or short EWG (development and economic promotion), acts as a service provider for companies, people interested in becoming residents in the area, and the local authorities of the county. As a full-service provider and initiator of regional projects, we are strongly committed to your future and growth in the economic center of Anhalt-Bitterfeld. We advise you quickly, competently and uncomplicated!

[Contact us at any time, trust on our support!](#)

### EWG Anhalt-Bitterfeld mbH

Elena Herzel, Managing Director

Andresenstraße 1a, 06766 Bitterfeld-Wolfen

Phone: +49 3494 638366

Email: [info@ewg-anhalt-bitterfeld.de](mailto:info@ewg-anhalt-bitterfeld.de)

### TEAM PORTFOLIO

- Marketing for the business location Anhalt-Bitterfeld
- Location agency / marketing
- Funding advice
- Consulting and qualification for entrepreneurs
- Promotion of innovation
- Network management
- Exhibition organization
- Project management

